



Item#: \_\_\_\_\_  
 Quantity: \_\_\_\_\_  
 Model #: E1-WDB-  
 Project #: \_\_\_\_\_

## E1 System Two-Basket Wall-Mount Dispenser



**Shown: E1-WDB-2H**  
 Patent Pending

### Standard Features:

- Wall-mount dispenser.
- The "Wall-mount Dave Bonfield" special.
- Holds Steril-Sil E1-BS6OE Silverware Baskets horizontally.
- Baskets held at an angle for easy access and basket loading.
- Wall mounted using anchor bolts (not included).
- Use for dispensing or creating a silverware sorting shelf over a soiled table.
- Silverware baskets not included.
- 18-gauge, 304 series stainless steel construction.
- 35" x 12 1/2" dimensions.
- NSF approved.
- Made in the U.S.A.



### Product Specification:

Steril-Sil model #E1-WDB-\_\_H Wall-Mount Dispenser. Works exclusively with the Steril-Sil E1 Silverware Handling System and holds Steril-Sil E1-BS-60E drop-In silverware baskets or other inserts horizontally. Baskets are held at an angle for easy access. Dispenser is wall mounted using anchor bolts (not included). 18-gauge, 304 series stainless steel construction. Overall dimensions are 35" x 12 1/2". NSF approved.

### Notes:

**Steril-Sil Company, LLC**  
 Phone: 800-784-5537  
 Email: quotes@sterilsil.com  
 www.sterilsil.com

## E1 System Wall-Mount Dispenser (cont'd)



E1-WDB-1H



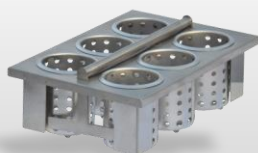
E1-WDB-2H

### E1 System Wall-Mount Dispenser

Designed for use with Steril-Sil E1 System inserts

Model	Description	Length	Width	Height
E1-WDB-1H	E1 System wall-mount single-insert dispenser with angled mount for easy loading and dispensing. Fits (1) E1 System basket horizontally.	18.00"	12.5"	N/A
E1-WDB-2H	E1 System wall-mount double-insert dispenser with angled mount for easy loading and dispensing. Fits (2) E1 System baskets horizontally.	35.00"	12.50"	N/A

#### Related Products:



**E1-BS6OE-SS**

E1 System drop-in basket with stainless-steel cylinders



**E1-CRT36-3V**

E1 System 36" open cart with E1 inserts



**E1-BSC-16**

E1 System basket storage cart. Holds (16) baskets



**E1-CBD-2V**

E1 System countertop dispenser with inserts