



Item#: \_\_\_\_\_  
 Quantity: \_\_\_\_\_  
 Model #: E1-BSC-   
 Project #: \_\_\_\_\_

# E1 System Basket Storage Cart



**Standard Features:**

- E1 System Basket Storage Cart.
- Designed to hold E1-BS6OE drop-in silverware baskets.
- Baskets held on basket slides.
- Solid base catches and contains excess dripping.
- Includes rack cover with (2) flap doors.
- Locking, non-marking casters.
- (4) corner bumpers.
- Fully-welded construction.
- NSF approved.
- Made in the U.S.A.



**Shown: E1-BSC-16**

Patent Pending

(shown with E1-BS6OE baskets, sold separately)

**Product Specification:**

Steril-Sil model #E1-BSC- Basket Storage Cart. Holds E1-BS6OE drop-in silverware baskets for storage. Solid base catches and contains excess water. Includes (4) corner bumpers, (4) locking casters and (1) rack cover with (2) flap doors. Fully-welded construction. NSF approved. Made in the U.S.A.

**Notes:**

**Steril-Sil Company, LLC**

Phone: 800-784-5537

Email: quotes@sterilsil.com

www.sterilsil.com

## E1 System Basket Storage Cart (cont'd)



E1-BSC-16



E1-BSC-8



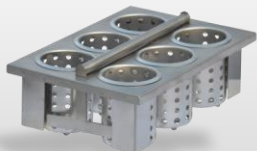
E1-BSC-4

### E1 System Basket Storage Cart

Designed for use with the E1 Silverware Handling System

Model #	Description	Overall Dimensions			Capacity	Ship #
		Width	Depth	Height	E1 Baskets	
E1-BSC-4	Basket Storage Cart. Holds (4) E1-BS6OE drop-in baskets, all 304 stainless steel construction. Fits under E1-STE series sorting tables.	30.50"	23.00"	32.00"	4	85 lbs.
E1-BSC-8	Basket Storage Cart. Holds (8) E1-BS6OE drop-in baskets, all 304 stainless steel construction.	30.50"	23.00"	57.00"	8	120 lbs
E1-BSC-16	Basket Storage Cart. Holds (16) E1-BS6OE drop-in baskets, all aluminum construction.	35.00"	44.00"	57.00"	16	115 lbs

#### Related Products:



**E1-BS6OE-SS**

E1 System drop-in silverware basket with stainless-steel cylinders



**E1-ENC24-2V**

E1 System mobile 24" counter for (2) inserts



**E1-CRT36-3V**

E1 System tray and silverware cart for (3) inserts



**E1-LSS-2H**

E1 System complete sorting station