



Item#: _____
 Quantity: _____
 Model #: E1-DDF-
 Project #: _____

E1 System Flush-Mount Drop-In Dispensers



Shown: E1-DDF-1VH

Patent Pending

(Shown with drop-in basket, sold separately)

Standard Features:

- Flush-mount drop-in countertop dispenser for the E1 System.
- Use as a liner to protect counter and countertop from scratches and water damage.
- For use in stainless steel, laminate, 3cm quartz and solid-surface countertops.
- Works exclusively with the Steril-Sil E1 System.
- Enclosed bottom catches and contains debris and spills.
- 1" flange holds the dispenser in place while protecting the countertop edge from scratching and chipping.
- Fully-welded 304 stainless steel construction.
- Use to achieve flush-mounted E1 System inserts in countertops
- NSF approved.



Product Specification:

Steril-Sil model #E1-DDF- Flush-Mount Drop-In Dispenser. Works exclusively with the Steril-Sil E1 System and accepts Steril-Sil E1 Inserts. Unit includes an enclosed base to catch and contain debris and spills. Fully-welded 304 stainless steel construction. NSF approved.

Notes:

Steril-Sil Company, LLC

Phone: 800-784-5537

Email: quotes@sterilsil.com

www.sterilsil.com



E1 System Flush-Mount Drop-In Dispensers (cont'd)



E1-DDF-05VH



E1-DDF-1VH



E1-DDF-2V



E1-DDF-3V

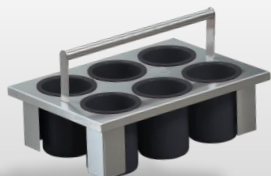
*** IMPORTANT:** Verify all cutout dimensions for manufacturing changes with delivered units prior to countertop cutout

E1 System Flush-Mount Drop-In Dispensers

Designed for use with Steril-Sil System inserts

| Model # | Description | Overall Dimensions | | | Cutout Dimensions* | |
|-------------|---|--------------------|--------|--------|--------------------|---------|
| | | Length | Depth | Height | Length | Width |
| E1-DDF-05VH | Half-size E1 flush-mount drop-in countertop dispenser with solid bottom. Holds (1) half-size E1 insert horizontally or vertically | 6.25" | 17.25" | 6.00" | 5.00" | 15.625" |
| E1-DDF-1VH | Single-insert E1 flush-mount drop-in countertop dispenser with solid bottom. Holds (1) E1 insert horizontally or vertically | 12.00" | 17.25" | 6.00" | 10.50" | 15.625" |
| E1-DDF-2V | Double-insert E1 flush-mount drop-in countertop dispenser with solid bottom. Holds (2) E1 inserts vertically | 23.00" | 17.25" | 6.00" | 21.50" | 15.625" |
| E1-DDF-3V | Triple-insert E1 flush-mount drop-in countertop dispenser with solid bottom. Holds (3) E1 inserts vertically | 33.50" | 17.25" | 6.00" | 32.75" | 15.625" |

Related Products:



E1-BS6OE-PC-BLACK

E1 System drop-in basket with black plastic containers



E1-BS3OE-PC-RED

E1 System drop-in half-size insert with red plastic containers



E1-CLH-05VH

E1 System cup, lid and sleeve dispenser



E1-2ND-1VH

E1 System dual napkin dispenser