



Item#: \_\_\_\_\_  
 Quantity: \_\_\_\_\_  
 Model #: E1-DDA-   
 Project #: \_\_\_\_\_

## E1 System Angled Drop-In Dispensers



**Shown: E1-DDA-2V**  
 Patent Pending  
 (Shown with inserts, sold separately)

### Standard Features:

- Angled drop-In countertop dispenser for the E1 System inserts.
- Works exclusively with the Steril-Sil E1 System.
- Enclosed bottom to catch and contain debris and spills.
- No-flange design
  - Stepped-in bottom on all four sides allows the unit to drop into a countertop and rest on top without the use of a flange, for a clean finished look.
- Low profile, angled design
  - the front sticks up from countertop only 1".
- Fully-welded 304 stainless steel construction.
- NSF approved.
- Made in the U.S.A.



### Product Specification:

Steril-Sil model #E1-DDA- Angled Drop-In Dispenser. Works exclusively with the Steril-Sil E1 System and accepts Steril-Sil E1 Inserts. Unit includes an enclosed bottom to catch and contain debris and spills. No-flange design--unit rests on countertop without the use of a flange for a clean finished look. Fully-welded 304 stainless steel construction. NSF approved. Made in the U.S.A.

### Notes:

**Steril-Sil Company, LLC**  
 Phone: 800-784-5537  
 Email: quotes@sterilsil.com  
 www.sterilsil.com

## E1 System Angled Drop-In Dispensers (cont'd)



E1-DDA-2V



E1-DDA-3V

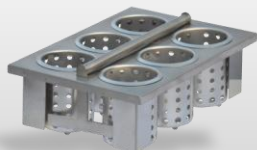
**\* IMPORTANT:** Verify all cutout dimensions for manufacturing changes with delivered units prior to countertop cutout

### E1 Angled Drop-In Dispenser

Designed for use with Steril-Sil System inserts

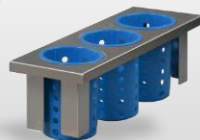
Model #	Description	Overall Dimensions			Cutout Dimensions*	
		Length	Width	Height	Length	Width
E1-DDA-2V	Double-insert E1 drop-in angled countertop dispenser with solid bottom. Holds (2) E1 inserts vertically	23.25"	16.50"	9.50"	21.75"	14.75"
E1-DDA-3V	Triple-insert E1 drop-in angled countertop dispenser with solid bottom. Holds (3) E1 inserts vertically	34.75"	16.50"	9.50"	33.00"	14.75"

### Related Products:



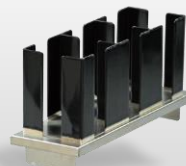
**E1-BS6OE-SS**

E1 System drop-in basket with stainless-steel cylinders



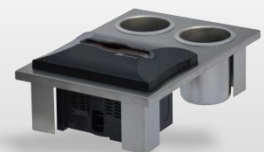
**E1-BS3OE-RP-BLUE**

E1 System drop-in half-size insert with blue plastic cylinders



**E1-CLH-05VH**

E1 System cup, lid and sleeve dispenser



**E1-1N52SD-1VH**

E1 System napkin and straw dispenser