



Item#: _____
 Quantity: _____
 Model #: E1-ENC -
 Project #: _____

E1 System Mobile Counters



Shown: E1-ENC48-4V
 Patent Pending
 (Shown with inserts, sold separately)

Standard Features:

- E1-ENC mobile counter works exclusively with the Steril-Sil E1 System.
- Configurable design with the use of E1 System inserts allows adaptation for changing needs throughout the day including:
 - Silverware dispensing
 - Napkin dispensing
 - Straw dispensing
 - Condiment packs and sweeteners
 - Condiment pumps for bulk dispensing
 - Various hotel pan configurations
 - Cups, lids and coffee cup sleeves and so much more
- Enclosed base for storage at the point of usage.
- 8" deep front shelf.
- Hinged doors.
- (1) door lock per door.
- (4) locking, non-marking casters.
- (4) corner bumpers.
- Integrated handles.
- Fully-welded 304 stainless steel construction.
- NSF approved.
- Made in the U.S.A.



Product Specification:

Steril-Sil model #E1-ENC Enclosed Mobile Counter. Works exclusively with the Steril-Sil E1 System allowing for a wide range of configurable dispensing using the E1 inserts. Includes an enclosed storage area with hinged doors, (1) door lock per door, (4) corner bumpers, (4) locking, non-marking casters and an 8" deep front shelf. Fully-welded 304 stainless steel construction. Made in the U.S.A.

Notes:

Steril-Sil Company, LLC
 Phone: 800-784-5537
 Email: quotes@sterilsil.com
 www.sterilsil.com

Classic Countertop Dispensers (cont'd)



E1-ENC24-2V



E1-ENC36-3V



E1-ENC36-1V1HP



E1-ENC48-4V



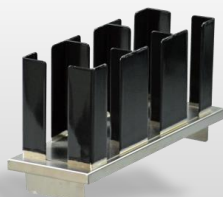
E1-ENC60-5V

E1 System Mobile Counters

Designed for use with E1 System inserts

Model #	Description	Overall Dimensions					Capacity	
		Length (w/ bumpers)	Depth (w/ bumpers)	Counter Height	Overall Height	Door Opening Height	E1 Inserts	Hotel Pans
E1-ENC24-2V	24" mobile counter. Holds (2) E1 inserts vertically	25.25"	24.75"	32.00"	41.00"	22.00"	2	0
E1-ENC36-3V	36" mobile counter. Holds (3) E1 inserts vertically	35.25"	24.75"	32.00"	41.00"	22.00"	3	0
E1-ENC36-1V1HP	36" mobile counter. Holds (1) E1 inserts vertically and (1) full-size hotel pan or any fractional combination using adapter bars	35.25"	24.75"	32.00"	41.00"	22.00"	1	1
E1-ENC48-4V	48" mobile counter. Holds (4) E1 inserts vertically	48.00"	24.75"	32.00"	41.00"	22.00"	4	0
E1-ENC60-5V	60" mobile counter. Holds (5) E1 inserts vertically	60.00"	24.75"	32.00"	41.00"	22.00"	5	0

Related Products:



E1-CLH-05VH

E1 System cup, lid, and sleeve holder



E1-CLD-25V

E1 System cold-food merchandiser



E1-RCL-2V-FOV

E1 System trash insert with tray return shelf



E1-1N51QP-1VH

E1 System napkin dispenser with pan