



Item#: _____
 Quantity: _____
 Model #: E1-CRT -
 Project #: _____

E1 System Dispensing Carts



Standard Features:

- E1 dispensing cart.
- Works exclusively with the Steril-Sil E1 Silverware Handling System.
- Configurable design allows adaptation for changing needs throughout the day including:
 - Silverware dispensing
 - Napkin dispensing
 - Straw dispensing
 - Tray dispensing
 - Glass dispensing
 - Various hotel pan configurations
- Set-back dispenser allows for easy tray or glass rack access.
- Standard side and back panels to prevent tray and glass racks from sliding through.
- Integrated handle grasps.
- Bottom shelf holds trays or glass racks.
- Locking, non-marking casters.
- (4) corner bumpers.
- Fully-welded 304 stainless steel construction.
- NSF approved.
- Made in the U.S.A.

Shown:
E1-CRT36-3V (top)
E1-CRT36-1V1HP (middle)
E1-CRT24-2V (bottom)
 Patent Pending
 (Shown with inserts, sold separately)



Product Specification:

Steril-Sil model #E1-CRT- Dispensing Cart. Works exclusively with the Steril-Sil E1 Silverware Handling System and accepts E1 System inserts. Configurable dispensing system for silverware, napkins, straws, trays, glass racks and more. Includes back and side panels, (4) corner bumpers and locking, non-marking casters. Fully-welded 304 stainless steel construction. NSF approved. Made in the U.S.A.

Notes:

Steril-Sil Company, LLC
 Phone: 800-784-5537
 Email: quotes@sterilsil.com
 www.sterilsil.com

E1 System Dispensing Carts (cont'd)



E1-CRT24-2V



E1-CRT36-3V



E1-CRT36-1V1HP



E1-CRT48-4V

E1 System Dispensing Carts

Designed for use with E1 System inserts

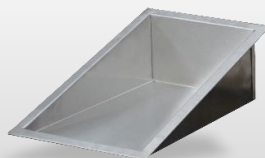
Model #	Description	Overall Dimensions				Capacity			
		Length	Depth	Front Height	Rear Height	E1 Inserts	Full-size pans	14x18 Trays	5" Glass Racks
E1-CRT24-2V	2-insert E1 dispensing cart. Holds (2) E1 inserts vertically	25.25"	24.75"	36.00"	41.00"	2	0	75	4
E1-CRT36-3V	3-insert E1 dispensing cart. Holds (3) E1 inserts vertically	35.25"	24.75"	36.00"	41.00"	3	0	150	4
E1-CRT36-1V1HP	Holds (1) E1 insert on left and (1) full-size food pan on right	35.25"	24.75"	36.00"	41.00"	1	1	150	4
E1-CRT48-4V	4-insert E1 dispensing cart. Holds (4) E1 inserts vertically	48.00"	24.75"	36.00"	41.00"	4	0	150	8

Related Products:



E1-BS6OE-SS

E1 System drop-in silverware basket with stainless cylinders



E1-FTA-1V

E1 System flat top insert for angled top carts and counters



E1-BSC-18

E1 System silverware basket storage cart



E1-2N5-1VH

E1 System dual napkin dispenser