



Item#: \_\_\_\_\_  
 Quantity: \_\_\_\_\_  
 Model #: E1-FTA -    
 Project #: \_\_\_\_\_

## E1 System Flat Top Adapter Inserts



**Shown: E1-FTA-2V**  
 Patent Pending

### Standard Features:

- E1 System FTA series inserts create a flat space for general dispensing or for placement of other countertop equipment, (e.g., coffee carafes, bread baskets, tabletop dispensers, etc.).
- Flanged body for use in angled E1 System dispensers, (i.e., countertop dispensers, drop-in angled countertop dispensers, CRT series carts, or ENC series mobile counters).
- Works exclusively with the Steril-Sil E1 System.
- Available in (5) sizes: single insert, 1.5 insert, double insert, 2.5 insert, and triple insert.
- Fully-welded 304 stainless steel construction.
- NSF approved.



### Product Specification:

Steril-Sil model #E1-FTA- inserts create a flat space for general dispensing, or as placement for other countertop equipment, such as coffee carafes, bread baskets, tabletop dispensers, etc. Fully-welded 304 series stainless steel construction. Works exclusively with the Steril-Sil E1 System. Use with E1 System countertop dispensers, drop-in countertop dispensers, carts, and mobile counters. NSF approved.

### Notes:

**Steril-Sil Company, LLC**  
 Phone: 800-784-5537  
 Email: quotes@sterilsil.com  
 www.sterilsil.com



## E1 System Flat Top Adapter Inserts (cont'd)



E1-FTA-1V



E1-FTA-15V



E1-FTA-2V



E1-FTA-25V



E1-FTA-3V

### E1 System Flat Top Adapter Inserts

Designed for use with the Steril-Sil E1 System

Model #	Description	E1 System Size
E1-FTA-1V	E1 System single-size insert that creates a flat space in angled dispensers/carts and counters.	Single (1)
E1-FTA-15V	E1 System 1.5-size insert that creates a flat space in angled dispensers/carts and counters.	One-and-a-half (1.5)
E1-FTA-2V	E1 System double-size insert that creates a flat space in angled dispensers/carts and counters.	Double (2)
E1-FTA-25V	E1 System 2.5-size insert that creates a flat space in angled dispensers/carts and counters.	Two-and-a-half (2.5)
E1-FTA-3V	E1 System triple-size insert that creates a flat space in angled dispensers/carts and counters.	Triple (3)

#### Related Products:



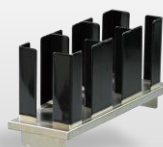
**E1-ENC36-3V**

E1 System 36" mobile counter



**E1-FTA-25V-DAOV**

E1 System double overshef insert with baskets



**E1-CLH-05VH**

E1 System cup, lid, and sleeve holder insert



**KIT-ENC48-451**

E1 System coffee service counter