



Item#: \_\_\_\_\_  
 Quantity: \_\_\_\_\_  
 Model #: E1-CLH-05VH  
 Project #: \_\_\_\_\_

## E1 System Cup, Lid and Sleeve Insert



**Shown: E1-CLH-05VH**  
 Patent Pending

### Standard Features:

- Drop-in cup, lid, and cup sleeve half-size insert for E1 System dispensers
- Holds (3) stacks of cups, lids, or cup sleeves
- Holds cups and lids up to 4.5" in diameter
- Holds standard cup sleeves
- Dividers are 6" high and can hold stacks up cups much higher
- Stainless-steel with hot-dipped plastic-coated dividers for safety and ease of cleaning
- Works exclusively with the Steril-Sil E1 System.
- Fully-welded 304 stainless steel construction.
- Made in the U.S.A.

### Product Specification:

Steril-Sil model #E1-CLH-05VH drop-in cup, lid, and cup sleeve insert for the Steril-Sil E1 System. Half-size insert with 6" high dividers. Stainless-steel construction with hot-dipped plastic coating on dividers for safety and ease of cleaning. Holds 3 stacks of cups, lids, or cup sleeves. Fits cups and lids up to 4.5" in diameter. Holds standard cup sleeves. Works exclusively with the E1 System. Made in the U.S.A.

### Notes:

**Steril-Sil Company, LLC**  
 Phone: 800-784-5537  
 Email: quotes@sterilsil.com  
 www.sterilsil.com

## E1 System Cup, Lid and Cup Sleeve Insert (cont'd)



E1-CLH-05VH  
cup, lid, and cup  
sleeve insert

### E1 System Cup, Lid, and Cup Sleeve Insert

Designed for use with the Steril-Sil E1 System

Model #	Description	Capacity
E1-CLH-05VH	Cup, lid, and cup sleeve insert. Half-size insert holds 3 stacks of cups, lids, or cup sleeves. Includes 6" high dividers that are hot-dipped plastic-coated for safety and ease of cleaning.	(3) stacks of cups, lids or cup sleeves up to 4.5" in diameter

#### Related Products:



**E1-DDF-05VH**

E1 System drop-in flush-mount countertop dispenser



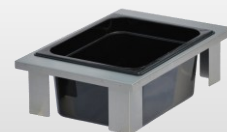
**KIT-ENC48-452**

E1 System 48" universal mobile dispenser/merchandiser



**E1-CBD-2V**

E1 System countertop dispenser



**E1-XHP-1VH**

E1 System half-size food pan insert