



Item#: _____
 Quantity: _____
 Model #: WSA-
 Project #: _____

Angled Food Pan Wall Shelves



Shown: WSA-1HP

Shown with (4) sixth-size pans,(2) adapter bars and (1) third-size pan.

(Pans and adapter bars not included.)

Standard Features:

- Angled food pan shelves create dispensing options in areas where countertop or workspace is a premium.
- Use for customer self-service or preparation support in the kitchen.
- Shelves hold multiple combinations of food pans.
- WSA-1HP model holds a full-size food pan or any fractional combination with the use of industry standard adapter bars.
- WSA-3Sp model holds (3) sixth-size pans.
- WSA-6SP model holds (6) sixth-size pans.
- Shelves are designed with a slight angle for easy access to pan contents.
- Pans and adapter bars not included.
- Mounting hardware not included.
- Fully-welded 304 stainless steel construction.

Product Specification:

Steril-Sil model #WSA- angled food pan wall shelf. Holds standard food pans or fractional combinations with the use of adapter bars. Angled for easy access to pan contents. Unit is welded 18-gauge, 304 series stainless steel. Pans, adapter bars and mounting hardware not included.

Notes:

Steril-Sil Company, LLC
 Phone: 800-784-5537
 Email: quotes@sterilsil.com
 www.sterilsil.com



Angled Food Pan Wall Shelves (cont'd)



WSA-1HP
(Holds (1) full-size hotel pan)



WSA-3SP
(Holds (3) sixth-size pans)



WSA-6SP
(Holds (6) sixth-size pans)

WSA Series Angled Food Pan Wall Shelves

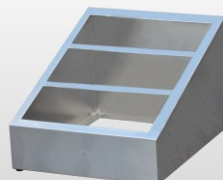
Designed to help maximize countertop and workspace.

Model #	Description	Food Pans	Length	Depth	Height
WSA-1HP	Angled food pan wall shelf. Holds (1) full-size food pan <u>or</u> fractional combinations of pans with the use of adapter bars	(1) full-size pan	23.00"	16.00"	8.00"
WSA-3SP	Angled food pan wall shelf. Holds (3) sixth-size, <u>or</u> (1) third-size <u>and</u> (1) sixth-size food pans, side by side in a single row.	(3) sixth-size pans	21.25"	8.75"	8.00"
WSA-6SP	Angled food pan wall shelf. Holds (6) sixth-size food pans, side by side in a single row.	(6) sixth-size pans	40.00"	8.75"	8.00"

Related Products:



UB-4SS
Underbar dispenser with S-500 silverware cylinders



VTC-9SP
Countertop dispenser. Holds (9) sixth-size pans



CC-LTC-4BR
(4)-hole ice-cooled bottle rail (bottles not included)



CV-BTL-6
Overshef-mounted squeeze bottle holder