



**Condiment
Beverage
Recycling Center
Coffee Service
Trash**

Mobile Convenience Counters



Mobile Counter Configurations

24" Bases

24 3/4"W x 24 1/2"D x 39"H
 8" convenience ledge
 32 1/2" ledge height
 Stainless steel construction
 (1) locking/keyed door
 (4) locking casters
 (4) corner bumpers
 Integrated handle grasps



ENC24-12RP
 (Includes (12) RP-25 plastic cylinders, specify cylinder color)



ENC24-12SS
 (Includes (12) S-500 stainless steel cylinders)



ENC24-1HP
 (Holds full-size hotel pan or combination of fractional pans)



E1-ENC24-3V
 (Holds (2) E1 System inserts)

36" Bases

35 1/4"W x 24 1/2"D x 39"H
 8" convenience ledge
 32 1/2" ledge height
 Stainless steel construction
 (1) locking/keyed door
 (4) locking casters
 (4) corner bumpers
 Integrated handle grasps



ENC36-18RP
 (Includes (18) RP-25 plastic cylinders, specify cylinder color)



ENC36-18SS
 (Includes (18) S-500 stainless steel cylinders)



ENC36-5TP
 (Holds (5) 1/3 size hotel pans or combination of fractional pans)



E1-ENC36-1V1HP
 (Holds (1) E1 System insert and a full-size hotel pan or combination of fractional pans)



E1-ENC36-3V
 (Holds (3) E1 System inserts)

48" Bases

48"W x 24 1/2"D x 39"H
 8" convenience ledge
 32 1/2" ledge height
 Stainless steel construction
 (2) locking/keyed doors
 (4) locking casters
 (4) corner bumpers
 Integrated handle grasps



ENC48-2HP
 (Holds (2) full-size hotel pans or combination of fractional pans)



E1-ENC48-1HP2V
 (Holds (1) full-size hotel pan or combination of fractional pans and (2) E1 System inserts)



E1-ENC48-4V
 (Holds (4) E1 System inserts)

Standard Features

- 304 stainless steel construction
- 16 gauge base, 18 gauge body, 16 gauge ledge
- Locking keyed doors (double pan construction) 18 gauge exterior panel, 20 gauge interior panel
- (4) corner bumpers
- (4) locking casters: 5" diameter wheel, 6" ride height

Available Options

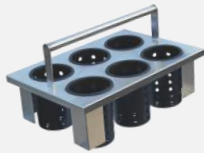
- Middle interior shelf
- Laminated sides
- Laminated back
- Laminated doors
- Trash flap in door
- Grommet holes



E1 System Inserts



E1-BS6OE-SS
(Drop-in basket with stainless steel cylinders)



E1-BS6OE-RP
(Drop-in basket with plastic cylinders)



E1-2N5-1VH
(Dual napkin dispenser)



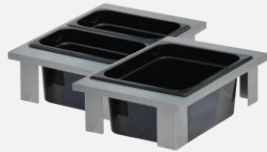
E1-1N52SD-1VH
(Napkin and straw insert)



E1-FTA-1V
(Single flat top insert)



E1-FTA-2V
(Dual flat top insert, takes up two insert spaces)



E1-XHP-1VH
(Half-size hotel pan insert, fits half-size or two quarter-size pans)



E1-CHUTE-2V
(Dual trash chute insert, takes up two insert spaces)



E1-CHUTE-1V
(Single trash chute insert)



RP-25 perforated cylinder color choices



PC-700 solid container color choices

Build-A-Counter

Questions to Ask

Things to consider and discuss to determine the best counter design.

- Silverware:
 - Will permanent or plastic silverware be dispensed?
 - What silverware is needed: Forks, Knives, Spoons, Soup Spoons, Salad Forks, etc.
 - If dispensing plastic silverware, will it be wrapped?
 - Non-wrapped plastic silverware and permanent silverware must be dispensed in a cylinder.
- Napkins and Straws:
 - Will napkins be dispensed?
 - Will straws be dispensed?
 - Each napkin dispenser has a 250 napkin capacity.
- Beverage:
 - How many different sweeteners or creamers will be dispensed?
 - Use hotel pan cutouts for large varieties. Use E1-XHP-1VH inserts when dispensing less varieties.
 - When dispensing a large number of varieties, use smaller fractional pans up to 6" deep to help dispense as many items as possible.
 - To help reduce theft, limit the number available to a reasonable refill amount.
- Condiment:
 - Will the condiments be dispensed as packs or from pumps?
 - How many different condiments will be dispensed?
- Trash:
 - Does trash or recycling need to be collected?
 - Consider a trash door for small amounts of trash. The trash door limits the size of the usable trash can and is perfect for collecting straw paper, sweetener packs and creamer cups.



48" Condiment Counter
(shown with Heinz Keystone pumps)

=



E1-ENC48-4V

+



E1-2N5-1VH

+



E1-XHP-1VH

+



E1-FTA-2V



Mobile Convenience Counter System

Mobile Convenience Counters Made Easy

Steril-Sil's mobile convenience counter system is the most flexible in the industry. Each mobile counter has multiple standard top configurations available. Each of those top configurations have multiple arrangements and options. With a list of available base options and top inserts to help you solve every issue, you can simply and easily design the exact counter you need.

Two Flexible Systems to Solve Any Problem

Utilize either the E1 System or standard hotel pan cutouts or a combination of both to make your counter dispense the exact items you need.

E1 System

The E1 System is the industry's most efficient way to handle silverware. Revolving around a drop-in silverware basket, the system helps save labor and organizes a dishroom more efficiently than any outdated and traditional handling techniques. There is no equal and nothing like it. Utilizing the E1 System in a counter is the perfect option to handle permanent silverware. The system also adds unmatched flexibility through the use of the many non-silverware handling inserts.

The E1 System inserts are interchangeable at the point of use. Rearrange the order or exchange one for another when the need arises. Utilizing the napkin dispensers, straw dispenser, trash chute, flat-top adapter, half-size hotel pan insert and more all gives you the flexibility to create the exact solution you need. The E1 System offers great flexibility in the design process and for the operator once the counter is in use.

Universal Hotel Pans

Hotel pan cutout tops create a universal and flexible space. With the many fraction pan sizes available, you can choose a top to dispense the exact number of items needed. The use of universal hotel pans also give the operator the ability to rearrange or change pan sizes as their operation evolves. Not only through the changing of the pan sizes, but changing the depth can create many different solutions.

Use a large or small, deep or shallow pan to adjust the capacity to exactly what you need to help fit the right amount of product.

Combination of Both

The combination of hotel pan cutouts with E1 System inserts in larger counters offer excellent versatility and the best of both options. Combination units offer great dispensing options and added flexibility unmatched by any other counter system in the industry.



24" Beverage Counter
(ENC24-1HP shown with (4) 1/6 size pans and (1) 1/3 size pan)



48" Beverage Counter with Trash Chute
(E1-ENC48-1HP2V shown with (1) 1/3 size pan, (4) 1/6 size pans, E1-2N5-1VH napkin dispenser and E1-CHUTE-1V trash chute)