



## 24" Open Base Carts

### 12-Hole Plastic Cylinder Carts

Four Locking Casters to prevent cart spin on uneven floors.  
Side and Back Panels to contain tray stacks from falling.  
Four Corner Bumpers to protect cart and walls.  
Integrated Handle Grasps for easy moving.  
Twelve Colored Silverware Cylinders\* included.

\* Cylinder color offerings vary. Verify color prior to placing order.



CRT24-12RP-RED CRT24-12RP-ORANGE CRT24-12RP-BROWN CRT24-12RP-GRAY



CRT24-12RP-WHITE CRT24-12RP-BLACK CRT24-12RP-HUNTER CRT24-12RP-LIME CRT24-12RP-YELLOW CRT24-12RP-VIOLET CRT24-12RP-BLUE

12-hole carts include silverware cylinders. For RP models, designate your desired color. SS models include the S-500 stainless steel silverware cylinder.



CRT24-12SS

### 12-Hole Stainless Steel Cylinder Cart

Four Locking Casters to prevent cart spin on uneven floors.  
Side and Back Panels to contain tray stacks from falling.  
Four Corner Bumpers to protect cart and walls.  
Integrated Handle Grasps for easy moving.  
Twelve Stainless Steel S-500 Silverware Cylinders included.

### Hotel Pan Cart

Four Locking Casters to prevent cart spin on uneven floors.  
Side and Back Panels to contain tray stacks from falling.  
Four Corner Bumpers to protect cart and walls.  
Integrated Handle Grasps for easy moving.  
Hotel Pan Cutout fits any combination of a full size pan.



CRT24-1HP

24" hotel pan cart fits a full-size hotel pan or any combination there of using adapter bars and fractional pans. Pan and adapter bars not included.

The E1 Silverware Handling System offers the most flexible design. Each cart holds two E1 System Inserts vertically. Chose from several different inserts.



E1-CRT24-3V

### E1 Silverware Handling System Cart

Four Locking Casters to prevent cart spin on uneven floors.  
Side and Back Panels to contain tray stacks from falling.  
Four Corner Bumpers to protect cart and walls.  
Integrated Handle Grasps for easy moving.  
Holds Two E1 Inserts Vertically



# 24" Enclosed Base Carts

## Enclosed 12-Hole Plastic Cylinder Carts

Four Locking Casters to prevent cart spin on uneven floors.

Enclosed Locking Base for storage of supplies.

Four Corner Bumpers to protect cart and walls.

Integrated Handle Grasps for easy moving.

Twelve Colored Silverware Cylinders\* included.

\* Cylinder color offerings vary. Verify color prior to placing order.



ENC24-12RP-RED ENC24-12RP-ORANGE ENC24-12RP-BROWN ENC24-12RP-GRAY



ENC24-12RP-WHITE ENC24-12RP-BLACK ENC24-12RP-HUNTER ENC24-12RP-LIME ENC24-12RP-YELLOW ENC24-12RP-VIOLET ENC24-12RP-BLUE



## Tray & Silverware Carts

Open base carts with cylinder cutouts or the E1 Silverware Handling System to dispense permanent silverware. Use hotel pan carts for wrapped plastic-ware.



## Beverage Carts

Open or enclosed base carts with hotel pan tops are great for dispensing sweeteners, stir sticks, creamers and more.



## Condiment Carts

Enclosed base carts with tray slide and hotel pan tops are perfect for dispensing condiments and to store back-up supplies.



ENC24-12SS

12-hole carts include silverware cylinders. For RP models, designate your desired color. SS models include the S-500 stainless steel silverware cylinder.

## Enclosed 12-Hole Stainless Steel Cylinder Cart

Four Locking Casters to prevent cart spin on uneven floors.

Enclosed Locking Base for storage of supplies.

Four Corner Bumpers to protect cart and walls.

Integrated Handle Grasps for easy moving.

Twelve Stainless Steel S-500 Silverware Cylinders included.



ENC24-1HP

24" hotel pan cart fits a full-size hotel pan or any combination there of using adapter bars and fractional pans. Pan and adapter bars not included.

## Enclosed Hotel Pan Cart

Four Locking Casters to prevent cart spin.

Enclosed Locking Base for storage of supplies.

Four Corner Bumpers to protect cart and walls.

Integrated Handle Grasps for easy moving.

Hotel Pan Cutout fits full-size pan or any combination with the use of adapter bars.



E1-ENC24-3V

## E1 Silverware Handling System Cart

Four Locking Casters to prevent cart spin.

Enclosed Locking Base for storage of supplies.

Four Corner Bumpers to protect cart and walls.

Integrated Handle Grasps for easy moving.

Holds Two E1 Inserts Vertically

The E1 Silverware Handling System offers the most flexible design. Each cart holds two E1 System Inserts vertically. Chose from several different inserts.

# 36" Open Base Carts

## 18-Hole Plastic Cylinder Carts

[Four Locking Casters](#) to prevent spin on uneven floors.  
[Side and Back Panels](#) to contain tray stacks from falling.  
[Four Corner Bumpers](#) to protect cart and walls from damage.  
[Integrated Handle Grasps](#) for easy moving.  
[Eighteen Colored Silverware Cylinders\\*](#) included.  
 \* Cylinder color offerings vary. Verify color prior to placing order.



CRT36-18RP-BROWN

CRT36-18RP-GRAY

CRT36-18RP-WHITE

CRT36-18RP-BLACK

CRT36-18RP-HUNTER

CRT36-18RP-LIME



CRT36-18RP-YELLOW

CRT36-18RP-VIOLET

CRT36-18RP-BLUE

## 18-Hole Stainless Steel Cylinder Cart

[Four Locking Casters](#)  
[Side and Back Panels](#)  
[Four Corner Bumpers](#)  
[Integrated Handle Grasps](#)  
[Eighteen Stainless Steel Silverware Cylinders](#) included.



CRT36-18SS

## Hotel Pan Cart

[Four Locking Casters](#) to prevent cart spin.  
[Side and Back Panels](#) to contain tray stacks.  
[Four Corner Bumpers](#) to protect cart and walls.  
[Integrated Handle Grasps](#) for easy moving.  
[Hotel Pan Cutout](#) fits any combination of one and two-thirds hotel pan. ((5) 1/3 size pans shown.)



CRT36-5TP

## E1 Silverware Handling System Carts

[Four Locking Casters](#) to prevent cart spin.  
[Side and Back Panels](#) to contain tray stacks.  
[Four Corner Bumpers](#) to protect cart and walls.  
[Integrated Handle Grasps](#) for easy moving.  
[Holds E1 Inserts Vertically or combination of E1 Insert with Hotel Pan](#)

The E1 Silverware Handling System offers the most flexible design. Choose from two cart top configurations; hold one E1 insert with a hotel pan or three E1 inserts vertically. Choose from several different inserts to make the cart that best fits your needs.

The E1 Silverware Handling System saves labor. The use of the E1 drop-in silverware basket throughout the wash cycle increases labor efficiency and keeps silverware cleaner.



E1-CRT36-3V

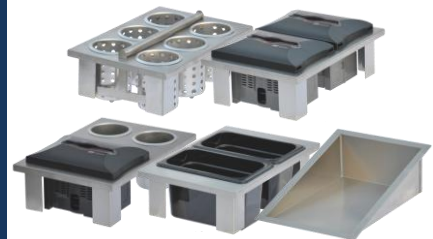


E1-CRT36-1V1HP



## E1 System Carts

E1 Silverware Handling System carts have a wide variety of inserts to solve many needs.



## E1 System Inserts

The use of drop-in silverware baskets, dual napkin dispensers, napkin and straw dispensers, half-size hotel pan inserts or flat-top adapters makes E1 System carts the most configurable and adaptable carts available.



## 36" Enclosed Base Carts

### Enclosed 18-Hole Plastic Cylinder Carts

[Four Locking Casters](#) to prevent cart spin on uneven floors.  
[Enclosed Locking Base](#) for storage of supplies.  
[Four Corner Bumpers](#) to protect cart and walls from damage.  
[Integrated Handle Grasps](#) for easy moving.  
[Eighteen Colored Silverware Cylinders\\*](#) included.  
 \* Cylinder color offerings vary. Verify color prior to placing order.



ENC36-18RP-RED

ENC36-18RP-ORANGE



ENC36-18RP-BROWN

ENC36-18RP-GRAY

ENC36-18RP-WHITE

ENC36-18RP-BLACK

ENC36-18RP-HUNTER

ENC36-18RP-LIME



ENC36-18RP-YELLOW

ENC36-18RP-VIOLET

ENC36-18RP-BLUE

### 18-Hole Stainless Steel Cylinder Cart

[Four Locking Casters](#)  
[Enclosed Locking Base](#)  
[Four Corner Bumpers](#)  
[Integrated Handle Grasps](#)  
[Eighteen Stainless Steel Silverware Cylinders](#) included.



ENC36-18SS

36" hotel pan cart fits up to (5) 1/3 size hotel pans or any combination there of using adapter bars with full and/or fractional pans. Pans and adapter bars not included.



ENC36-5TP

### Enclosed Hotel Pan Cart

[Four Locking Casters](#) to prevent spin on uneven floors.  
[Enclosed Locking Base](#) for storage of supplies.  
[Four Corner Bumpers](#) to protect cart and walls.  
[Integrated Handle Grasps](#) for easy moving.  
[Hotel Pan Cutout](#) fits any combination of one and two-thirds hotel pan.

### E1 Silverware Handling System Cart

[Four Locking Casters](#) to prevent cart spin.  
[Enclosed Locking Base](#) for storage of supplies.  
[Four Corner Bumpers](#) to protect cart and walls.  
[Integrated Handle Grasps](#) for easy moving.  
[Holds E1 Inserts Vertically](#) or combination of E1 Insert with Hotel Pan



E1-ENC36-1V1HP

E1-ENC36-3V

The E1 Silverware Handling System offers the most flexible design. Hold three E1 inserts or one insert and one full-size hotel pan. Many inserts available.

## 48" Open and Enclosed Base Carts

There are two 48" carts available, an open and enclosed base version for the E1 Silverware Handling System.



E1-CRT48-4V

E1-ENC48-4V

### E1 Silverware Handling System Cart

[Four Locking Casters](#) to prevent cart spin.  
[Open or Enclosed Locking Base](#)  
[Four Corner Bumpers](#) to protect cart and walls.  
[Integrated Handle Grasps](#) for easy moving.  
[Holds Four E1 Inserts Vertically](#)

