



Item#:	_____
Quantity:	_____
Model #:	E1-WDB-2H
Project #:	_____

## E1 Two-Basket Wall-Mount Dispenser



**Model #: E1-WDB-2H**

Patent Pending

### Standard Features:

- Two-basket wall-mount dispenser
- The 'Wall-mount Dave Bonfield' special
- Holds two (2) Steril-Sil E1-BS6OE Silverware Basket horizontally
- Baskets held at an angle for easy access and basket loading
- Wall mounted using anchor bolts (not included)
- Use for dispensing or for creating a silverware sorting shelf over a soiled table
- Silverware baskets not included
- 18-gauge, 304 series stainless steel construction
- 35" x 12 1/2" dimensions
- NSF approved
- Made in the U.S.A.



### Product Specification:

Steril-Sil model #E1-WDB-2H Two-Basket Wall-Mount Dispenser. Works exclusively with the Steril-Sil E1 Silverware Handling System and holds two (2) Steril-Sil E1-BS-60E-W Drop-In Silverware Baskets horizontally. Baskets are held at an angle for easy access. Dispenser is wall mounted using anchor bolts (not included). 18-gauge, 304 series stainless steel construction. Overall dimensions are 35" x 12 1/2". NSF approved. Made in the U.S.A.

### Notes:

**Steril-Sil Company, LLC**  
 Phone: 800-784-5537  
 Email: quotes@sterilsil.com  
 www.sterilsil.com



## E1 Wall-Mount Dispenser (cont'd)



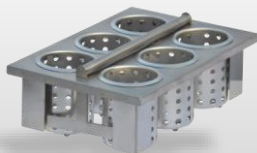
E1-WDB-2H

### E1 Wall-Mount Dispenser

Designed for use with Steril-Sil Silverware Handling System

Model	Description	Length	Width	Height
E1-WDB-2H	E1 System wall-mount 2-hole dispenser with angled mount for easy loading and dispensing. Fits two (2) E1 System baskets horizontally.	35.00"	12.50"	N/A

#### Related Products:



**E1-BS6OE-SS**

E1 System drop-in basket with stainless steel cylinders



**E1-CRT36-3V**

E1 System 36" open cart with E1 inserts



**E1-BSC-16**

E1 System basket storage cart holds (16) baskets



**E1-CBD-2V**

E1 System countertop dispenser with inserts

See the E1 Accessories page for additional options and details