



Item #: \_\_\_\_\_  
 Quantity: \_\_\_\_\_  
 Model #: E1-DDA-   
 Project #: \_\_\_\_\_

## E1 Angled Drop-In Dispensers



**Model #: E1-DDA-2V**  
 (Drop-in silverware baskets sold separately)

Patent Pending

### Standard Features:

- Angled drop-in countertop dispenser for the E1 Silverware Handling System
- Works exclusively with the Steril-Sil E1 Silverware Handling System
- Enclosed bottom contains debris and spills
- No-flange design; the stepped-in bottom on four sides allows the unit to drop into a countertop and rest on top without the use of a flange for a clean finished look
- Low profile, angled design; the front sticks up front countertop only 1"
- All welded 304 stainless steel construction
- NSF approved
- Made in the U.S.A.



### Product Specification:

Steril-Sil model #E1-DDA- Angled Drop-In Dispenser. Works exclusively with the Steril-Sil E1 Silverware Handling System and accepts Steril-Sil E1 Inserts. Unit includes an enclosed bottom to contain debris and spills. No-flange design; unit rests on countertop without the use of a flange for a clean finished look. All welded 304 stainless steel construction. NSF approved. Made in the U.S.A.

### Notes:

**Steril-Sil Company, LLC**  
 Phone: 800-784-5537  
 Email: quotes@sterilsil.com  
 www.sterilsil.com



## E1 Angled Drop-In Dispensers (cont'd)



E1-DDA-2V



E1-DDA-3V

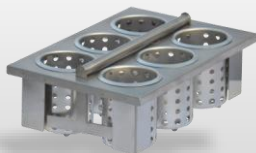
**\* IMPORTANT:** Verify all cutout dimensions for manufacturing changes with delivered units prior to countertop cutout

### E1 Angled Drop-In Dispenser

Designed for use with Steril-Sil Silverware Handling System

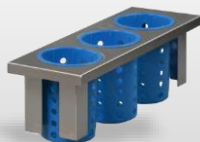
Model #	Description	Overall Dimensions			Cutout Dimensions*	
		Length	Width	Height	Length	Width
E1-DDA-2V	2-hole E1 drop-in angled countertop dispenser with solid bottom holds (2) E1 inserts vertically	23.25"	16.50"	9.50"	21.75"	14.75"
E1-DDA-3V	3-hole E1 drop-in angled countertop dispenser with solid bottom holds (3) E1 inserts vertically	34.75"	16.50"	9.50"	33.00"	14.75"

#### Related Products:



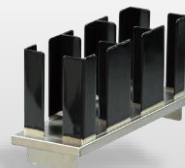
**E1-BS6OE-SS**

E1 System drop-in basket with stainless steel cylinders



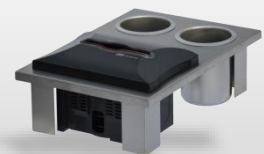
**E1-BS3OE-RP-BLUE**

E1 System drop-in half-size insert with blue plastic cylinders



**E1-CLH-05VH**

E1 System cup, lid and sleeve dispenser



**E1-1N52SD-1VH**

E1 System napkin and straw dispenser