



Item #: _____
 Quantity: _____
 Model #: E1-CBD-
 Project #: _____

E1 Countertop Dispensers



Standard Features:

- Countertop E1 Silverware Handling System dispenser
- Works exclusively with the Steril-Sil E1 Silverware Handling System
- Various sizes with vertical and horizontal orientations
- Open frame design for multiple E1 System configurations and uses
- Non-marking feet
- All welded 304 stainless steel construction
- NSF approved
- Made in the U.S.A.



Model #: E1-CBD-3V
Model #: E1-CBD-2V
 Accessories sold separately

Patent Pending

Product Specification:

Steril-Sil model #E1-CBD- Countertop Dispenser. Works exclusively with the Steril-Sil E1 System and accepts Steril-Sil E1 Inserts. Includes four (4) non-marking feet. All welded 304 stainless steel construction. NSF approved. Made in the U.S.A.

Notes:

Steril-Sil Company, LLC
 Phone: 800-784-5537
 Email: quotes@sterilsil.com
 www.sterilsil.com



E1 Countertop Dispensers (cont'd)



E1-CBD-1H



E1-CBD-1V



E1-CBD-2V



E1-CBD-25V



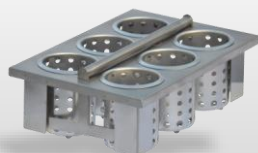
E1-CBD-3V

E1 System Countertop Dispenser

Designed for use with Steril-Sil E1 Silverware Handling System

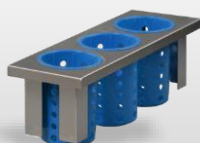
Model #	Description	Length	Width	Height	Ship #
E1-CBD-1H	1-hole E1 countertop dispenser holds (1) E1 insert horizontally	17.00"	11.50"	7.50"	6 lbs.
E1-CBD-1V	1-hole E1 countertop dispenser holds (1) E1 insert vertically	12.00"	16.50"	9.25"	6 lbs.
E1-CBD-2V	2-hole E1 countertop dispenser holds (2) E1 inserts vertically	23.25"	16.50"	9.25"	12 lbs.
E1-CBD-25V	2.5-hole E1 countertop dispenser holds (2-½) E1 inserts vertically	28.625"	16.50"	9.25"	12 lbs.
E1-CBD-3V	3-hole E1 countertop dispenser holds (3) E1 inserts vertically	34.25"	16.50"	9.25"	16 lbs.

Related Products:



E1-BS6OE-SS

E1 System drop-in basket with stainless steel cylinders



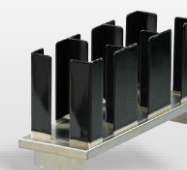
E1-BS3OE-RP-BLUE

E1 System drop-in half-size insert with blue plastic cylinders



E1-2N5-1VH

E1 System dual napkin dispenser



E1-CLH-05VH

E1 System cup, lid and sleeve dispenser