



Item#: \_\_\_\_\_  
 Quantity: \_\_\_\_\_  
 Model #: E1-CRT  -   
 Project #: \_\_\_\_\_

## E1 Dispensing Carts



**Model #: E1-CRT36-3V** (top)  
**Model #: E1-CRT36-1V1HP** (middle)  
**Model #: E1-CRT24-2V** (bottom)  
 Shown with E1 accessories  
 Patent Pending

### Standard Features:

- E1 dispensing cart
- Works exclusively with the Steril-Sil E1 Silverware Handling System
- Configurable design allows adaptation for changing needs throughout the day including:
  - Silverware dispensing
  - Napkin dispensing
  - Straw dispensing
  - Tray dispensing
  - Glass dispensing
  - Various hotel pan configurations
- Dispenser setback allows for easy tray or glass rack access
- Standard side and back panels to prevent tray and glass racks from sliding through
- Integrated handle grasps
- Bottom shelf holds trays or glass racks
- Locking, non-marking casters
- Four (4) corner bumpers
- All welded 304 stainless steel construction
- NSF approved
- Made in the U.S.A.



### Product Specification:

Steril-Sil model #E1-CRT- Dispensing Cart. Works exclusively with the Steril-Sil E1 Silverware Handling System and accepts E1 System inserts. Configurable dispensing system for silverware, napkins, straws, trays, glass racks and more. Includes back and side panels, four (4) corner bumpers and locking, non-marking casters. All welded 304 stainless steel construction. NSF approved. Made in the U.S.A.

### Notes:

**Steril-Sil Company, LLC**  
 Phone: 800-784-5537  
 Email: quotes@sterilsil.com  
 www.sterilsil.com



## E1 Dispensing Carts (cont'd)



E1-CRT24-2V



E1-CRT36-3V



E1-CRT36-1V1HP



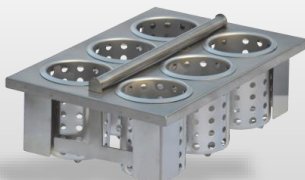
E1-CRT48-4V

### E1 Dispensing Carts

Designed for use with the E1 Silverware Handling System

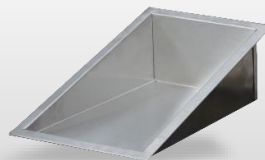
Model #	Description	Overall Dimensions				Capacity			
		Length	Depth	Front Height	Rear Height	E1 Inserts	Full-size pans	14x18 Trays	5" Glass Racks
E1-CRT24-2V	2-hole E1 dispensing cart holds (2) E1 inserts vertically	25.25"	24.75"	36.00"	41.00"	2	0	75	4
E1-CRT36-3V	3-hole E1 dispensing cart holds (3) E1 inserts vertically	35.25"	24.75"	36.00"	41.00"	3	0	150	4
E1-CRT36-1V1HP	Holds (1) E1 insert left and (1) full-size food pan on right	35.25"	24.75"	36.00"	41.00"	1	1	150	4
E1-CRT48-4V	4-hole E1 dispensing cart holds (4) E1 inserts vertically	48.00"	24.75"	36.00"	41.00"	4	0	150	8

### Related Products:



**E1-BS6OE-SS**

E1 System drop-in silverware basket with stainless cylinders



**E1-FTA-1V**

E1 System flat top insert for angled top carts and counters



**E1-BSC-18**

E1 System silverware basket storage cart



**E1-2N5-1VH**

E1 System dual napkin dispenser