



Item #: _____
Quantity: _____
Model #: _____
Project #: _____

E1 System Inserts

E1 System, a solution for all

The E1 System is the most versatile dispensing system in the foodservice industry. With inserts to solve countless scenarios, the E1 System inserts can be used in a wide range of dispensers including countertop, drop-in countertop, carts and mobile counters.

Arrange and adjust inserts as needed. If serving and dispensing needs change, do not make major counter alterations. With the E1 System, simply replace the obsolete insert with the new solution. It's fast, simple and smart saving you time and money.

Many size inserts to maximize space

- Half-size inserts
- Single size inserts
- 1.5 size inserts
- Double size inserts
- 2.5 size inserts
- Triple size inserts

Dispensing solutions for the following

- Silverware
- Plasticware
- Condiment packs
- Bulk condiments with pumps
- Napkins
- Straws and stir sticks
- Sweeteners
- Creamer
- Cups, lids and cup sleeves
- Trash and recycling inserts
- Tray return shelves
- Merchandising overshelves
- Flat-top inserts to place coffee urns, baskets, decorations, signage, and anything else needed at the point of use!



Dispensers for all applications

- Countertop dispensers
- Flush-mount drop-in countertop dispensers
- Angled drop-in countertop dispensers
- Carts
- Mobile counters
- Merchandising/kiosk counters



Made in the U.S.A.

Notes:

Steril-Sil Company, LLC
Phone: 800-784-5537
Email: quotes@sterilsil.com
www.sterilsil.com

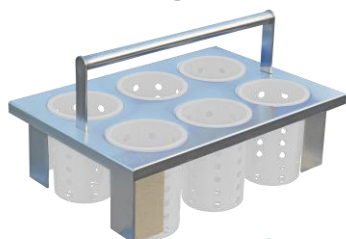


E1 System Inserts (cont'd)



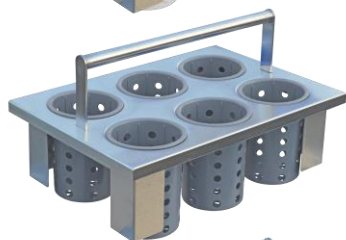
Drop-In Basket - E1-BS6OE-SS

- Single (1) - size insert
- Six (6) hole basket with drop-down handle for dispensing
- Includes six (6) Steril-Sil S-500 stainless steel silverware cylinders
- NSF approved



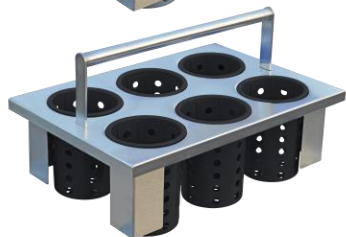
Drop-In Basket - E1-BS6OE-RP-WHITE

- Single (1) - size insert
- Six (6) hole basket with drop-down handle for dispensing
- Includes six (6) Steril-Sil RP-25-WHITE plastic silverware cylinders
- NSF approved



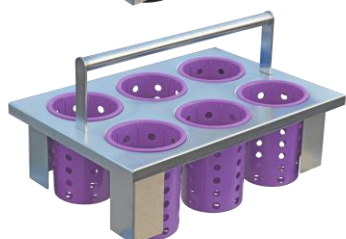
Drop-In Basket - E1-BS6OE-RP-GRAY

- Single (1) - size insert
- Six (6) hole basket with drop-down handle for dispensing
- Includes six (6) Steril-Sil RP-25-GRAY plastic silverware cylinders
- NSF approved



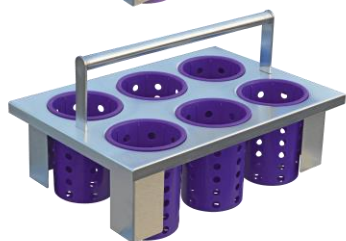
Drop-In Basket - E1-BS6OE-RP-BLACK

- Single (1) - size insert
- Six (6) hole basket with drop-down handle for dispensing
- Includes six (6) Steril-Sil RP-25-BLACK plastic silverware cylinders
- NSF approved



Drop-In Basket - E1-BS6OE-RP-VIOLET

- Single (1) - size insert
- Six (6) hole basket with drop-down handle for dispensing
- Includes six (6) Steril-Sil RP-25-VIOLET plastic silverware cylinders
- NSF approved



Drop-In Basket - E1-BS6OE-RP-PURPLE

- Single (1) - size insert
- Six (6) hole basket with drop-down handle for dispensing
- Includes six (6) Steril-Sil RP-25-PURPLE plastic silverware cylinders
- NSF approved



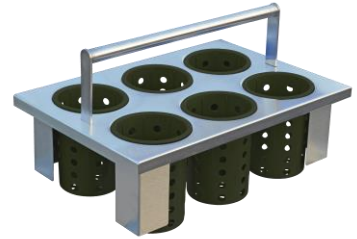
Drop-In Basket - E1-BS6OE-RP-BLUE

- Single (1) - size insert
- Six (6) hole basket with drop-down handle for dispensing
- Includes six (6) Steril-Sil RP-25-BLUE plastic silverware cylinders
- NSF approved

E1 System Inserts (cont'd)

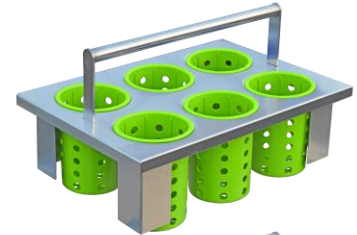
Drop-In Basket - E1-BS6OE-RP-HUNTER

- Single (1) - size insert
- Six (6) hole basket with drop-down handle for dispensing
- Includes six (6) Steril-Sil RP-25-HUNTER plastic silverware cylinders
- NSF approved



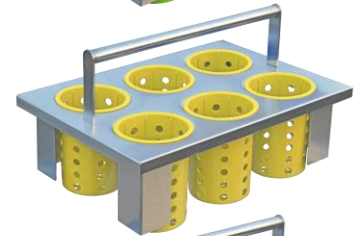
Drop-In Basket - E1-BS6OE-RP-LIME

- Single (1) - size insert
- Six (6) hole basket with drop-down handle for dispensing
- Includes six (6) Steril-Sil RP-25-LIME plastic silverware cylinders
- NSF approved



Drop-In Basket - E1-BS6OE-RP-YELLOW

- Single (1) - size insert
- Six (6) hole basket with drop-down handle for dispensing
- Includes six (6) Steril-Sil RP-25-YELLOW plastic silverware cylinders
- NSF approved



Drop-In Basket - E1-BS6OE-RP-ORANGE

- Single (1) - size insert
- Six (6) hole basket with drop-down handle for dispensing
- Includes six (6) Steril-Sil RP-25-ORANGE plastic silverware cylinders
- NSF approved



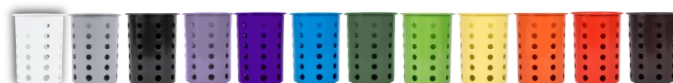
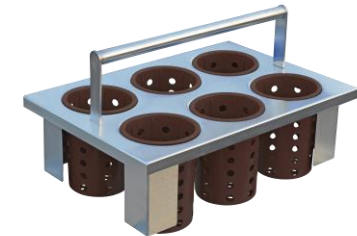
Drop-In Basket - E1-BS6OE-RP-RED

- Single (1) - size insert
- Six (6) hole basket with drop-down handle for dispensing
- Includes six (6) Steril-Sil RP-25-RED plastic silverware cylinders
- NSF approved



Drop-In Basket - E1-BS6OE-RP-BROWN

- Single (1) - size insert
- Six (6) hole basket with drop-down handle for dispensing
- Includes six (6) Steril-Sil RP-25-BROWN plastic silverware cylinders
- NSF approved



RP-25 Cylinder Colors

White, Gray, Black, Violet, Purple, Blue, Hunter, Lime, Yellow, Orange, Red and Brown.

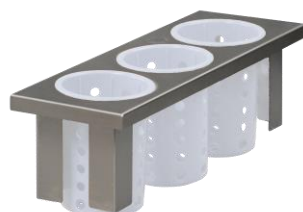


E1 System Inserts (cont'd)



Drop-In 3-Hole Insert - E1-BS3OE-SS

- Half (½) - size insert
- 3-hole drop in insert
- Includes three (3) Steril-Sil S-500 stainless steel silverware cylinders
- NSF approved



Drop-In 3-Hole Insert - E1-BS3OE-RP-WHITE

- Half (½) - size insert
- 3-hole drop in insert
- Includes three (3) Steril-Sil RP-25-WHITE plastic silverware cylinders
- NSF approved



Drop-In 3-Hole Insert - E1-BS3OE-RP-GRAY

- Half (½) - size insert
- 3-hole drop in insert
- Includes three (3) Steril-Sil RP-25-GRAY plastic silverware cylinders
- NSF approved



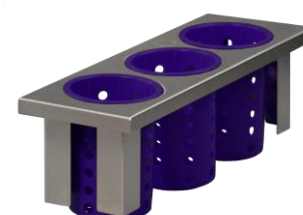
Drop-In 3-Hole Insert - E1-BS3OE-RP-BLACK

- Half (½) - size insert
- 3-hole drop in insert
- Includes three (3) Steril-Sil RP-25-BLACK plastic silverware cylinders
- NSF approved



Drop-In 3-Hole Insert - E1-BS3OE-RP-VIOLET

- Half (½) - size insert
- 3-hole drop in insert
- Includes three (3) Steril-Sil RP-25-VIOLET plastic silverware cylinders
- NSF approved



Drop-In 3-Hole Insert - E1-BS3OE-RP-PURPLE

- Half (½) - size insert
- 3-hole drop in insert
- Includes three (3) Steril-Sil RP-25-PURPLE plastic silverware cylinders
- NSF approved



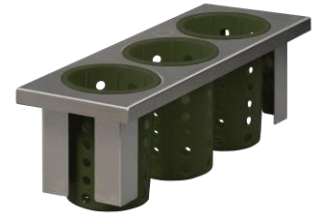
Drop-In 3-Hole Insert - E1-BS3OE-RP-BLUE

- Half (½) - size insert
- 3-hole drop in insert
- Includes three (3) Steril-Sil RP-25-BLUE plastic silverware cylinders
- NSF approved

E1 System Inserts (cont'd)

Drop-In 3-Hole Insert - E1-BS3OE-RP-HUNTER

- Half (½) - size insert
- 3-hole drop in insert
- Includes three (3) Steril-Sil RP-25-HUNTER plastic silverware cylinders
- NSF approved



Drop-In 3-Hole Insert - E1-BS3OE-RP-LIME

- Half (½) - size insert
- 3-hole drop in insert
- Includes three (3) Steril-Sil RP-25-LIME plastic silverware cylinders
- NSF approved



Drop-In 3-Hole Insert - E1-BS3OE-RP-YELLOW

- Half (½) - size insert
- 3-hole drop in insert
- Includes three (3) Steril-Sil RP-25-YELLOW plastic silverware cylinders
- NSF approved



Drop-In 3-Hole Insert - E1-BS3OE-RP-ORANGE

- Half (½) - size insert
- 3-hole drop in insert
- Includes three (3) Steril-Sil RP-25-ORANGE plastic silverware cylinders
- NSF approved



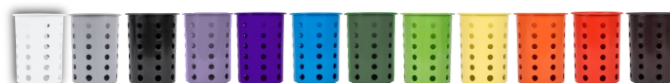
Drop-In 3-Hole Insert - E1-BS3OE-RP-RED

- Half (½) - size insert
- 3-hole drop in insert
- Includes three (3) Steril-Sil RP-25-RED plastic silverware cylinders
- NSF approved



Drop-In 3-Hole Insert - E1-BS3OE-RP-BROWN

- Half (½) - size insert
- 3-hole drop in insert
- Includes three (3) Steril-Sil RP-25-BROWN plastic silverware cylinders
- NSF approved



RP-25 Cylinder Colors

White, Gray, Black, Violet, Purple, Blue, Hunter, Lime, Yellow, Orange, Red and Brown.



E1 System Inserts (cont'd)



Drop-In Container Basket - E1-BS6OE-SC-750

- Single (1) - size insert
- Six (6) hole basket with drop-down handle for dispensing
- Includes six (6) Steril-Sil SC-750 30 oz. stainless steel solid containers
- NSF approved



Drop-In Container Basket - E1-BS6OE-PC-BLACK

- Single (1) - size insert
- Six (6) hole basket with drop-down handle for dispensing
- Includes six (6) Steril-Sil PC-700-BLACK 30 oz. plastic solid containers
- NSF approved



Drop-In Container Basket - E1-BS6OE-PC-WHITE

- Single (1) - size insert
- Six (6) hole basket with drop-down handle for dispensing
- Includes six (6) Steril-Sil PC-700-WHITE 30 oz. plastic solid containers
- NSF approved



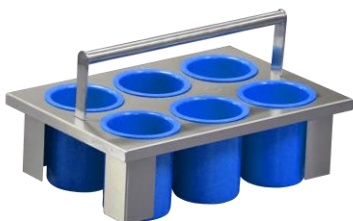
Drop-In Container Basket - E1-BS6OE-PC-GRAY

- Single (1) - size insert
- Six (6) hole basket with drop-down handle for dispensing
- Includes six (6) Steril-Sil PC-700-GRAY 30 oz. plastic solid containers
- NSF approved



Drop-In Container Basket - E1-BS6OE-PC-RED

- Single (1) - size insert
- Six (6) hole basket with drop-down handle for dispensing
- Includes six (6) Steril-Sil PC-700-RED 30 oz. plastic solid containers
- NSF approved



Drop-In Container Basket - E1-BS6OE-PC-BLUE

- Single (1) - size insert
- Six (6) hole basket with drop-down handle for dispensing
- Includes six (6) Steril-Sil PC-700-BLUE 30 oz. plastic solid containers
- NSF approved



PC-700 Container Colors

Black, White, Gray, Red and Blue.



E1 System Inserts (cont'd)

Drop-In 3-Hole Container Insert - E1-BS3OE-SC-750

- Half (½) - size insert
- 3-hole drop in insert
- Includes three (3) Steril-Sil SC-750 30 oz. stainless steel solid containers
- NSF approved



Drop-In 3-Hole Container Insert - E1-BS3OE-PC-BLACK

- Half (½) - size insert
- 3-hole drop in insert
- Includes three (3) Steril-Sil PC-700-BLACK 30 oz. plastic solid containers
- NSF approved



Drop-In 3-Hole Container Insert - E1-BS3OE-PC-WHITE

- Half (½) - size insert
- 3-hole drop in insert
- Includes three (3) Steril-Sil PC-700-WHITE 30 oz. plastic solid containers
- NSF approved



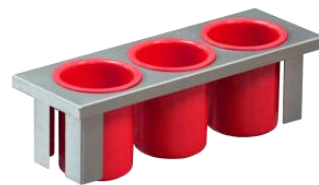
Drop-In 3-Hole Container Insert - E1-BS3OE-PC-GRAY

- Half (½) - size insert
- 3-hole drop in insert
- Includes three (3) Steril-Sil PC-700-GRAY 30 oz. plastic solid containers
- NSF approved



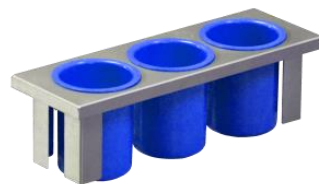
Drop-In 3-Hole Container Insert - E1-BS3OE-PC-RED

- Half (½) - size insert
- 3-hole drop in insert
- Includes three (3) Steril-Sil PC-700-RED 30 oz. plastic solid containers
- NSF approved



Drop-In 3-Hole Container Insert - E1-BS3OE-PC-BLUE

- Half (½) - size insert
- 3-hole drop in insert
- Includes three (3) Steril-Sil PC-700-BLUE 30 oz. plastic solid containers
- NSF approved



PC-700 Container Colors
Black, White, Gray, Red and Blue.



E1 System Inserts (cont'd)



Dual Napkin Insert - E1-2N5-1VH

- Single (1) - size insert
- Includes (2) Tork Xpressnap 5" drop-in napkin dispensers
- Dispenser capacity is 250 napkins each, 500 total
- NSF approved



Napkin & Container Insert- E1-1N52SD-1VH

- Single (1) - size insert
- Includes (1) Tork Xpressnap 5" drop-in napkin dispenser
- Includes (2) SC-750 stainless steel 30 oz. containers
- NSF approved



Napkin & 1/4-Size Pan Insert - E1-1N51QP-1VH

- Single (1) - size insert
- Includes (1) Tork Xpressnap 5" drop-in napkin dispenser
- (1) quarter-size food pan
- NSF approved



Napkin & (2) 1/9-Size Pan Insert - E1-1N52NP-1VH

- Single (1) - size insert
- Includes (1) Tork Xpressnap 5" drop-in napkin dispenser
- (2) ninth-size food pans
- NSF approved



Half-Size Pan Insert - E1-XHP-1VH

- Single (1) - size insert
- Holds (1) half-size or (2) quarter-size food pans
- Half-size pan included
- NSF approved



Solid/Flat Insert - E1-SLD-1VH

- Single (1) - size insert
- To create a flat surface in DDF series dispensers
- Fills a void in all angled dispensers, carts and counters
- NSF approved



Cup, Lid & Cup Sleeve Insert - E1-CLH-05VH

- Half (1/2) - size insert
- Holds (3) stacks of cups or lids up to 4 5/8" diameter or cup sleeves
- Plastic-coated stainless-steel dividers are 6" high
- NSF approved

E1 System Inserts (cont'd)

Condiment Pump Insert- E1-CND1-1V

- Single (1) - size insert
- Fits one (1) 2.5- or 3.5-quart fountain jar (not included)
- For use with condiment pump or ladle with lid (not included)
- NSF approved



Condiment Pump Insert- E1-CND2-1V

- Single (1) - size insert
- Fits two (2) 2.5- or 3.5-quart fountain jars (not included)
- For use with condiment pumps or ladles with lid (not included)
- NSF approved



Condiment Pump Insert- E1-CND3-15V

- One-and-a-half (1-½) - size insert
- Fits three (3) 2.5- or 3.5-quart fountain jars (not included)
- For use with condiment pumps or ladles with lid (not included)
- NSF approved



Condiment Pump Insert - E1-CND4-2V

- Double (2) - size insert
- Fits four (4) 2.5- or 3.5-quart fountain jars (not included)
- For use with condiment pumps or ladles with lid (not included)
- NSF approved



7 Quart Condiment Insert - E1-CND-7QT-15V

- One-and-a-half (1-½) - size insert
- For use with Server Products model # 83220 and 7-quart insert
- Includes 1/6-size pan to hold soufflé cups and drip pan
- NSF approved



Use E1 System condiment inserts with 2.5- and 3.5-quart fountain jars and pumps. There are a wide range of pump styles available; plastic and stainless steel along with different portion sizes. Jars and pumps by others. Show is a E1-CND4-2V with an E1-1N51QP-1VH to include napkins, soufflé cups and lids.



E1 System Inserts (cont'd)



1 Position Flat Top Insert- E1-FTA-1V

- Single (1) - size insert
- Creates a flat space in angled dispensers/carts and counters
- Flat space dimensions are 9- $\frac{1}{2}$ " wide x 14- $\frac{1}{8}$ " front to back
- NSF approved



1- $\frac{1}{2}$ Position Flat Top Insert- E1-FTA-15V

- One-and-a-half (1- $\frac{1}{2}$) - size insert
- Creates a flat space in angled dispensers/carts and counters
- Flat space dimensions are 15- $\frac{1}{4}$ " wide x 14- $\frac{1}{8}$ " front to back
- NSF approved



2 Position Flat Top Insert - E1-FTA-2V

- Double (2) - size insert
- Creates a flat space in angled dispensers/carts and counters
- Flat space dimensions are 20- $\frac{3}{4}$ " wide x 14- $\frac{1}{8}$ " front to back
- NSF approved



2- $\frac{1}{2}$ Position Flat Top Insert - E1-FTA-25V

- Two-and-a-half (2- $\frac{1}{2}$) - size insert
- Creates a flat space in angled dispensers/carts and counters
- Flat space dimensions are 26- $\frac{3}{4}$ " wide x 14- $\frac{1}{8}$ " front to back
- NSF approved



3 Position Flat Top Insert - E1-FTA-3V

- Triple (3) - size insert
- Creates a flat space in angled dispensers/carts and counters
- Flat space dimensions are 32- $\frac{3}{4}$ " wide x 14- $\frac{1}{8}$ " front to back
- NSF approved

Use E1 System FTA flat top inserts to create a flat surface in CRT carts, ENC counters and all angled dispensers for a wide range of uses. Shown is an E1-FTA-2V with (3) coffee air pots with room for drip trays in front of each.



E1 System Inserts (cont'd)

Flat-Top with Overshelf Insert - E1-FTA-2V-FOV

- Double (2) - size insert
- Creates a flat space in angled dispensers, carts and counters
- Bottom space dimensions are 20- $\frac{3}{4}$ " wide x 14- $\frac{1}{8}$ " front to back
- Overshelf space is 20- $\frac{5}{8}$ " wide x 10" deep
- Clearance to bottom of overshelf is 10- $\frac{3}{4}$ "
- NSF approved



Flat-Top Insert with Double-Angled-Overshelf and Baskets - E1-FTA-25V-DAOV

- Two-and-a-half (2- $\frac{1}{2}$) - size insert
- For merchandising of cold and wrapped/package items
- Bottom FTA insert creates a flat space in angled dispensers, carts and counters while the double-angled-overshelf with baskets is space saving and creates extra merchandising opportunities
- Bottom space dimensions are 26- $\frac{3}{4}$ " wide x 14- $\frac{1}{8}$ " front to back
- Overshelves are 26- $\frac{1}{4}$ " wide x 12" deep each
- Includes baskets for overshelves
- NSF approved



Cold Merchandising Insert - E1-CLD-25V

- Two-and-a-half (2- $\frac{1}{2}$) - size insert
- For CRT and ENC series carts and counters
- Includes full-size insulated pan for use with ice, for dispensing of cold items such as creamers or merchandising of fruits, yogurts and more
- NSF approved



Cold Merchandising Insert with Double-Angled-Overshelf and Baskets - E1-CLD-25V-DAOV

- Two-and-a-half (2- $\frac{1}{2}$) - size insert
- For CRT and ENC series carts and counters
- Each overshelf is 26- $\frac{1}{4}$ " wide x 12" deep
- Includes full-size insulated pan for use with ice, for dispensing of cold items such as creamers or merchandising of fruits, yogurts and more
- Includes baskets for overshelves
- NSF approved





E1 System Inserts (cont'd)



Trash/Recycling Insert - E1-RCS-1V

- Single (1V) - size insert
- One (1) small round chute, 4" in diameter
- Easily cleaned in dish machine
- NSF approved



Trash/Recycling Insert - E1-RCL-1V

- Single (1V) - size insert
- One (1) large round chute, 8" in diameter
- Easily cleaned in dish machine
- NSF approved



Trash/Recycling Insert - E1-RCL-2V

- Double (2V) - size insert
- One (1) large round chute, 8" in diameter
- Easily cleaned in dish machine
- NSF approved



Trash/Recycling Insert - E1-2RCS-2V

- Double (2V) - size insert
- Two (2) small round chutes, each 4" in diameter
- Easily cleaned in dish machine
- NSF approved



Trash/Recycling Insert - E1-RCLRCS-3V

- Triple (3V) - size insert
- One (1) large and one (1) small round chutes, 8" and 4" in diameter
- Easily cleaned in dish machine
- NSF approved

E1 System trash and recycling inserts are for use in ENC counters. Use small inserts to add to beverage and condiment counters to manage trash and keep areas clean. Use larger chutes to create trash and recycling centers. For applications with trays such as schools or restaurants, use trash and recycling inserts with overselves for tray return.



E1 System Inserts (cont'd)

Trash/Recycling Insert - E1-RCL-2V-FOV

- Double (2) - size insert
- For use in ENC series counters
- One (1) large round chute, 8" in diameter
- Overshelf for tray/dish/silverware return
- Easily cleaned in dish machine
- Includes (1) 19-gallon square black trash can
- NSF approved



Trash/Recycling Insert - E1-2RCS-2V-FOV

- Double (2) - size insert
- For use in ENC series counters
- Two (2) small round chutes, each 4" in diameter
- Overshelf for tray/dish/silverware return
- Easily cleaned in dish machine
- Includes (2) 10.25-gallon square black trash cans
- NSF approved



Trash/Recycling Insert - E1-RCLRCS-3V-FOV

- Triple (3) - size insert
- For use in ENC series counters
- One (1) large and one (1) small round chute, 8" and 4" in diameter
- Overshelf for tray/dish/silverware return
- Easily cleaned in dish machine
- Includes (1) 19-gallon and (1) 10.25-gallon black trash can
- NSF approved



For applications with trays such as schools or business cafeterias, chain restaurants and more, use trash and recycling inserts with overshelves for tray return. Larger overshelf models can be used for both tray and silverware return.



E1 System Inserts (cont'd)

Sweetener and Condiment Pack Dispensing Speed Pour and Squeeze Bottle Inserts

Model #	Description	Page	Capacity
E1-BS3OE-PC-BLACK	E1 System drop-in 3-hole insert w/ (3) PC-700-BLACK containers	7	(3) containers
E1-BS3OE-PC-BLUE	E1 System drop-in 3-hole insert w/ (3) PC-700-BLUE containers	7	
E1-BS3OE-PC-GRAY	E1 System drop-in 3-hole insert w/ (3) PC-700-GRAY containers	7	
E1-BS3OE-PC-RED	E1 System drop-in 3-hole insert w/ (3) PC-700-RED containers	7	
E1-BS3OE-PC-WHITE	E1 System drop-in 3-hole insert w/ (3) PC-700-WHITE containers	7	
E1-BS3OE-SC-750	E1 System drop-in 3-hole insert w/ (3) SC-750 stainless steel containers	7	(6) containers
E1-BS6OE-PC-BLACK	E1 System drop-in basket w/ (6) PC-700-BLACK containers	6	
E1-BS6OE-PC-BLUE	E1 System drop-in basket w/ (6) PC-700-BLUE containers	6	
E1-BS6OE-PC-GRAY	E1 System drop-in basket w/ (6) PC-700-GRAY containers	6	
E1-BS6OE-PC-RED	E1 System drop-in basket w/ (6) PC-700-RED containers	6	
E1-BS6OE-PC-WHITE	E1 System drop-in basket w/ (6) PC-700-WHITE containers	6	
E1-BS6OE-SC-750	E1 System drop-in basket w/ (6) SC-750 stainless steel containers	6	250 napkins with (2) containers
E1-1N52SD-1VH	E1 System napkin dispenser with (2) SC-750 stainless steel containers	8	
E1-1N51QP-1VH	E1 System napkin and quarter-size food pan	8	
E1-1N52NP-1VH	E1 System napkin and (2) ninth-size food pans	8	
E1-XHP-1VH	E1 System half-size hotel pan insert	8	(1) half or (2) quarter-size food pans

Bulk Condiment Dispensing

Model #	Description	Page	Capacity
E1-CND1-1V	E1 System condiment pump insert for (1) fountain jar	9	2.5- or 3.5-quart fountain jars for use with pumps or lids with ladles
E1-CND2-1V	E1 System condiment pump insert for (2) fountain jars	9	
E1-CND3-15V	E1 System condiment pump insert for (3) fountain jars	9	
E1-CND4-2V	E1 System condiment pump insert for (4) fountain jars	9	
E1-CND-7QT-15V	E1 System condiment insert for Server Products #83220 with 7qt insert	9	n/a

Cup & Lid Dispensing

Model #	Description	Page	Capacity
E1-CLH-05VH	E1 System cup & lid holder, holds 3 stacks of cups, lids or cup sleeves	8	4 ⁵ / ₈ " max dia.

Souffle Cups and Lid Dispensing

Model #	Description	Page	Capacity
E1-1N52SD-1VH	E1 System napkin dispenser with (2) SC-750 stainless containers	8	250 napkins with (2) stainless containers
E1-1N51QP-1VH	E1 System napkin and quarter-size food pan	8	250 napkins with (1) quarter-size pan
E1-1N52NP-1VH	E1 System napkin and (2) ninth-size food pans	8	250 napkins with (2) ninth-size pan
E1-XHP-1VH	E1 System half-size hotel pan insert	8	(1) half or (2) quarter-size food pans

E1 System Inserts (cont'd)

Straws and Stir Sticks Dispensing

Model #	Description	Page	Capacity
E1-BS3OE-PC-BLACK	E1 System drop-in 3-hole insert w/ (3) PC-700-BLACK containers	7	(3) containers
E1-BS3OE-PC-BLUE	E1 System drop-in 3-hole insert w/ (3) PC-700-BLUE containers	7	
E1-BS3OE-PC-GRAY	E1 System drop-in 3-hole insert w/ (3) PC-700-GRAY containers	7	
E1-BS3OE-PC-RED	E1 System drop-in 3-hole insert w/ (3) PC-700-RED containers	7	
E1-BS3OE-PC-WHITE	E1 System drop-in 3-hole insert w/ (3) PC-700-WHITE containers	7	
E1-BS3OE-SC-750	E1 System drop-in 3-hole insert w/ (3) SC-750 containers	7	(3) containers
E1-1N52SD-1VH	E1 System napkin dispenser with (2) SC-750 stainless containers	8	250 napkins or 290 wrapped straws

Napkin Dispensing

Model #	Description	Page	Capacity
E1-1N52SD-1VH	E1 System napkin with (2) SC-750 stainless steel containers	8	250 napkins
E1-1N51QP-1VH	E1 System napkin with quarter-size food pan	8	
E1-1N52NP-1VH	E1 System napkin with two quarter-size food pans	8	
E1-2N5-1VH	E1 System dual napkin dispenser insert	8	500 napkins

Silverware/Plasticware Dispensing

Model #	Description	Page	Capacity
E1-BS6OE-RP-BLACK	E1 System drop-in silverware basket w/ (6) RP-25-BLACK cylinders	2	(6) cylinders
E1-BS6OE-RP-BLUE	E1 System drop-in silverware basket w/ (6) RP-25-BLUE cylinders	2	
E1-BS6OE-RP-BROWN	E1 System drop-in silverware basket w/ (6) RP-25-BROWN cylinders	3	
E1-BS6OE-RP-GRAY	E1 System drop-in silverware basket w/ (6) RP-25-GRAY cylinders	2	
E1-BS6OE-RP-HUNTER	E1 System drop-in silverware basket w/ (6) RP-25-HUNTER cylinders	3	
E1-BS6OE-RP-LIME	E1 System drop-in silverware basket w/ (6) RP-25-LIME cylinders	3	
E1-BS6OE-RP-ORANGE	E1 System drop-in silverware basket w/ (6) RP-25-ORANGE cylinders	3	
E1-BS6OE-RP-PURPLE	E1 System drop-in silverware basket w/ (6) RP-25-PURPLE cylinders	2	
E1-BS6OE-RP-RED	E1 System drop-in silverware basket w/ (6) RP-25-RED cylinders	3	
E1-BS6OE-RP-VIOLET	E1 System drop-in silverware basket w/ (6) RP-25-VIOLET cylinders	2	
E1-BS6OE-RP-WHITE	E1 System drop-in silverware basket w/ (6) RP-25-WHITE cylinders	2	
E1-BS6OE-RP-YELLOW	E1 System drop-in silverware basket w/ (6) RP-25-YELLOW cylinders	3	
E1-BS6OE-SS	E1 System drop-in silverware basket w/ (6) S-500 stainless cylinders	2	
E1-BS3OE-RP-BLACK	E1 System drop-in 3-hole insert w/ (3) RP-25-BLACK cylinders	4	(3) cylinders
E1-BS3OE-RP-BLUE	E1 System drop-in 3-hole insert w/ (3) RP-25-BLUE cylinders	4	
E1-BS3OE-RP-BROWN	E1 System drop-in 3-hole insert w/ (3) RP-25-BROWN cylinders	5	
E1-BS3OE-RP-GRAY	E1 System drop-in 3-hole insert w/ (3) RP-25-GRAY cylinders	4	
E1-BS3OE-RP-HUNTER	E1 System drop-in 3-hole insert w/ (3) RP-25-HUNTER cylinders	5	
E1-BS3OE-RP-LIME	E1 System drop-in 3-hole insert w/ (3) RP-25-LIME cylinders	5	
E1-BS3OE-RP-ORANGE	E1 System drop-in 3-hole insert w/ (3) RP-25-ORANGE cylinders	5	
E1-BS3OE-RP-PURPLE	E1 System drop-in 3-hole insert w/ (3) RP-25-PURPLE cylinders	4	
E1-BS3OE-RP-RED	E1 System drop-in 3-hole insert w/ (3) RP-25-RED cylinders	5	
E1-BS3OE-RP-VIOLET	E1 System drop-in 3-hole insert w/ (3) RP-25-VIOLET cylinders	4	
E1-BS3OE-RP-WHITE	E1 System drop-in 3-hole insert w/ (3) RP-25-WHITE cylinders	4	
E1-BS3OE-RP-YELLOW	E1 System drop-in 3-hole insert w/ (3) RP-25-YELLOW cylinders	5	
E1-BS3OE-SS	E1 System drop-in 3-hole insert w/ (3) S-500 cylinders	4	



E1 System Inserts (cont'd)

Paper Plate and Paper Bowl Dispensing

Model #	Description	Page	Capacity
E1-1N51QP-1VH	E1 System napkin with quarter-size food pan	8	Maximum plate or bowl diameter of 8- $\frac{3}{4}$ "
E1-XHP-1VH	E1 System half-size pan insert, use (1) half or (2) quarter-size pans	8	

Insulated Cold Pan Inserts

Model #	Description	Page	Capacity
E1-CLD-25V	E1 System insert with full-size insulated food pan for use with ice	11	Full-size pan
E1-CLD-25V-DAOV	E1 System insert with full-size insulated food pan for use with ice, with angled double-overshelf with merchandising baskets	11	

Merchandising Overshelf Inserts

Model #	Description	Page	Capacity
E1-FTA-2V-FOV	E1 System insert with flat surface and angled overshelf with merchandising baskets	11	Single overshelf
E1-FTA-25V-DAOV	E1 System insert with flat surface and angled double-overshelf with merchandising baskets	11	Double angle overshelf
E1-CLD-25V-DAOV	E1 System insert with full-size insulated food pan for use with ice, with angled double-overshelf with merchandising baskets	11	

Trash, Recycling and Tray, Dish, Silverware Return Inserts

Model #	Description	Page	Capacity
E1-RCS-1V	E1 System trash and recycling insert with small trash cutout	12	4" round
E1-RCL-1V	E1 System trash and recycling insert with large trash cutout	12	8" round
E1-RCL-2V	E1 System trash and recycling insert with large trash cutout	12	8" round
E1-2RCS-2V	E1 System trash and recycling insert with two small trash cutouts	12	(2) 4" round
E1-RCLRCS-3V	E1 System trash and recycling insert with one large and one small trash cutout	12	8" round and 4" round
E1-RCL-2V-FOV	E1 System trash and recycling insert with large trash cutout and an overshelf for tray, dish or silverware return	13	8" round
E1-2RCS-2V-FOV	E1 System trash and recycling insert with two small trash cutouts and an overshelf for tray, dish or silverware return	13	(2) 4" small
E1-RCLRCS-3V-FOV	E1 System trash and recycling insert with one large and one small trash cutout and an overshelf for tray, dish or silverware return	13	8" round and 4" round



California Prop 65 Warning



WARNING: These products may contain chemicals known to the state of California to cause cancer and birth defects or other reproductive harm.

For more information: www.P65Warnings.ca.gov