



Item#: \_\_\_\_\_  
 Quantity: \_\_\_\_\_  
 Model #: SK-  \_\_\_\_\_  
 Project #: \_\_\_\_\_

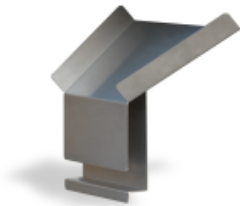
## Mobile Silverware Soak Sinks and Chute



**Model #: SK-2222**



**Model #: SK-2025**



**Model #: SK-RSC**

**Standard Features:**

- Heavy duty 14-gauge all-welded construction
- Sinks include:
  - Rolled edge top prevents water from collecting and wicking to worker pant legs
  - Four-way creased sink bottom
  - Twist-lever drain
  - (4) locking, non-marking casters
- 14 gauge, 304 stainless steel
- NSF approved
- Made in the U.S.A.



**Product Specification:**

Steril-Sil model #SK- Heavy Duty Mobile Silverware Soak Sink. 14-gauge 304 stainless steel all welded construction includes rolled-edge lip, four-way creased bottom, twist-lever drain and non-marking locking casters. NSF approved. Made in the U.S.A.

**Notes:**

**Steril-Sil Company, LLC**  
 Phone: 800-784-5537  
 Fax: 617-739-5063  
 Email: quotes@sterilsil.com  
 www.sterilsil.com



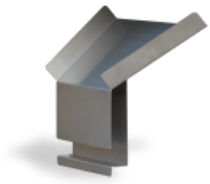
## Mobile Silverware Soak Sinks and Chute (cont'd)



Model #: SK-2222



Model #: SK-2025



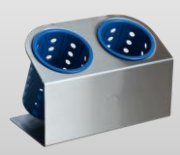
Model #: SK-RSC

### Mobile Silverware Soak Sinks

Heavy Duty Mobile Soak Sinks for the Best Warewashing Results

Model #	Description	Inside Bowl Dimensions			Overall Dimensions		
		Length	Width	Height	Length	Width	Height
SK-2222	Flat rack mobile soak sink. For use alone or with 20"x20" dish rack.	22.00"	22.00"	10.00"	25.00"	25.00"	18.00"
SK-2025	Extra large and deep heavy duty mobile soak sink. For use alone or with 20"x20" dish rack.	20.50"	25.50"	12.00"	23.50"	28.50"	21.00"
SK-RSC	Removable chute for Steril-Sil mobile soak sinks; SK-2222 and SK-2025	N/A	N/A	N/A	16.00"	6.25"	16.50"

### Available Accessories:



**HKS-2**  
Cantilever Dispenser  
with RP-25 Series Cylinders



**STE-44-BN**  
44" Mobile Sorting Table



**S-500**  
High Capacity Stainless  
Steel Silverware Cylinder



**CRT36-18RP**  
36" Tray & Silverware cart