



Item #: _____
 Quantity: _____
 Model #: CRT -
 Project #: _____

Food Pan Carts



Model #: CRT24-1HP (left)
Model #: E1-CRT36-1V1HP (right)
 (Shown with pans and E1 accessories not included)

Standard Features:

- Dispensing carts utilizing standard size food pans
- Use full-size or any combination of fractional size pans with the use of adapter bars to dispense a wide range of products.
- Great carts for bulk dispensing of:
 - Wrapped plasticware
 - Condiment packs
 - Straws
 - Trays or glass racks from the bottom shelf
- Dispenser setback allows for easy tray or glass rack access
- Standard side and back panels to prevent tray and glass racks from sliding through
- Integrated handles
- Bottom shelf holds trays or glass racks
- Four (4) locking, non-marking casters
- Four (4) corner bumpers
- All welded 304 stainless steel construction
- NSF approved
- Made in the U.S.A.



Product Specification:

Steril-Sil model #CRT - Dispensing Cart. Utilizes standard food pans for dispensing a wide range of products. Full-size pans or fractional pans with the use of adapter bars. Includes back and side panels, four (4) corner bumpers integrated handles and (4) locking, non-marking casters. All welded 304 stainless steel construction. NSF approved. Made in the U.S.A.

Notes:

Steril-Sil Company, LLC
 Phone: 800-784-5537
 Email: quotes@sterilsil.com
 www.sterilsil.com



Food Pan Carts (cont'd)



CRT24-1HP



CRT36-5TP



E1-CRT36-1V1HP



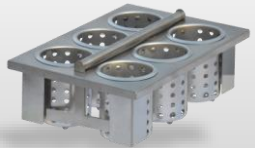
CRT48-2HP

Food Pan Carts

Carts utilizing standard size food pans to dispense a wide range of products

Model #	Description	Overall Dimensions				Capacity			
		Length	Depth	Front Height	Rear Height	Full-Size Pans	E1 Inserts	14x18 Trays	5" Glass Racks
CRT24-1HP	24" cart holds one (1) full-size food pan	25.25"	24.75"	36.00"	41.00"	1	0	75	4
CRT36-5TP	36" cart holds five (5) third-size food pans	35.25"	24.75"	36.00"	41.00"	1+2/3	0	150	4
E1-CRT36-1V1HP	Holds (1) E1 insert left and (1) full-size pan on right	35.25"	24.75"	36.00"	41.00"	1	1	150	4
CRT48-2HP	4-hole E1 dispensing cart holds (4) E1 inserts vertically	48.00"	24.75"	36.00"	41.00"	2	0	150	8

Related Products:



E1-BS6OE-SS

E1 System drop-in silverware basket with S-500 cylinders



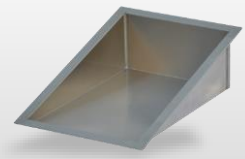
ENC24-1HP

24" mobile counter with full-size food pan cutout



E1-2N5-1VH

E1 System drop-in dual napkin dispenser



E1-FTA-1V

E1 System flat top adapter

See the E1 Accessories page for additional options and details