



Item #: _____
 Quantity: _____
 Model #: _____
 Project #: _____

Cantilevered Countertop/Wall-Mount Dispensers

REVERSIBLE!

All HKS models can be used as countertop or wall-mount dispensers



Model #: (2)HKS-3 (wall-mount)

Model #: HKS-2 (countertop)

Each shown with accessories

Standard Features:

- A unique twist on a classic design
- Each unit works as both a countertop and wall-mount dispenser
- 4" round cut-outs work with Steril-Sil silverware cylinders or 30 oz. containers, both of which are offered in a wide range of colors and material options
- Cantilever design creates an open back and sides to show off your cylinder or container choice
- When used as a countertop dispenser, the flat front is an excellent branding space for marketing or decoration application
- When used as a wall-mount dispenser, multiple units can be stacked on top of each other to create a one-piece look. The unit has a small shelf at the top, great for small branding signs and other small items.
- Light weight and portable
- 304 stainless steel construction
- 3M non-marking feet
- NSF approved
- Made in the U.S.A.



Product Specification:

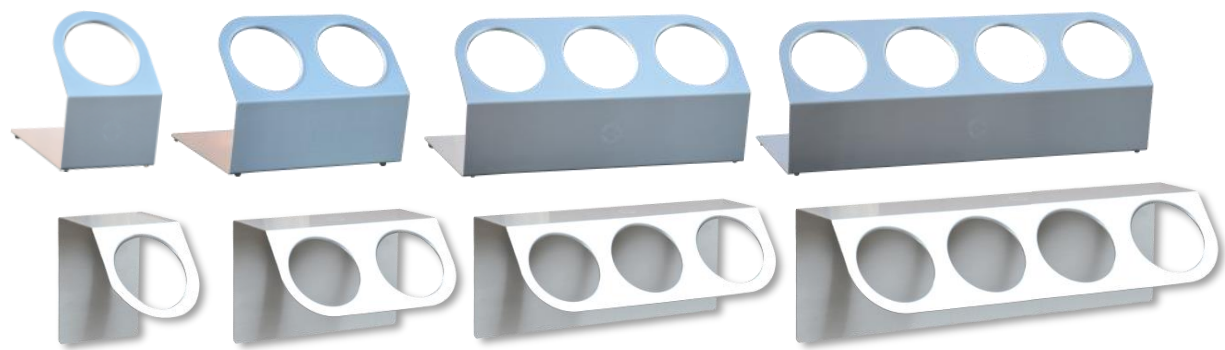
Steril-Sil model #HKS- Cantilevered Countertop/Wall-Mount Dispenser. Single-piece construction for durability and ease of cleaning. Can be used as a countertop dispenser or a wall-mount dispenser. Hardware for wall-mounting not included. Includes 3M non-marking feet. 304 stainless steel construction. NSF approved. Made in the U.S.A.

Notes:

Steril-Sil Company, LLC
 Phone: 800-784-5537
 Email: quotes@sterilsil.com
 www.sterilsil.com



Cantilevered Countertop/Wall-Mount Dispensers (cont'd)



Model #: HKS-1

Model #: HKS-2

Model #: HKS-3

Model #: HKS-4

REVERSIBLE!

All HKS models can be used as countertop or wall-mount dispensers

Cantilevered Countertop/Wall-Mount Dispensers

An elegant twist on a classic design with multiple applications

Model #	Description	Length	Width	Height
HKS-1	1-hole countertop/wall-mount dispenser, cantilever design with open sides and back.	5.25"	6.50"	7.50"
HKS-2	2-hole countertop/wall-mount dispenser, cantilever design with open sides and back.	10.50"	6.50"	7.50"
HKS-3	3-hole countertop/wall-mount dispenser, cantilever design with open sides and back.	15.75"	6.50"	7.50"
HKS-4	4-hole countertop/wall-mount dispenser, cantilever design with open sides and back.	21.00"	6.50"	7.50"

Related Products:



S-500

High-capacity stainless steel silverware cylinder



RP-25 series

Plastic silverware cylinders available in 12 colors



SC-750

Stainless steel 30-ounce container



PC-700 series

Plastic 30-oz containers in 5 colors